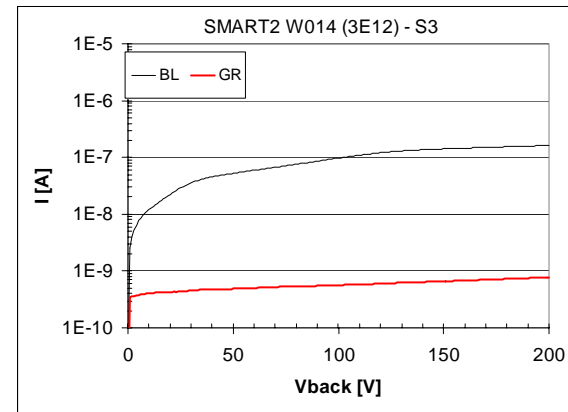
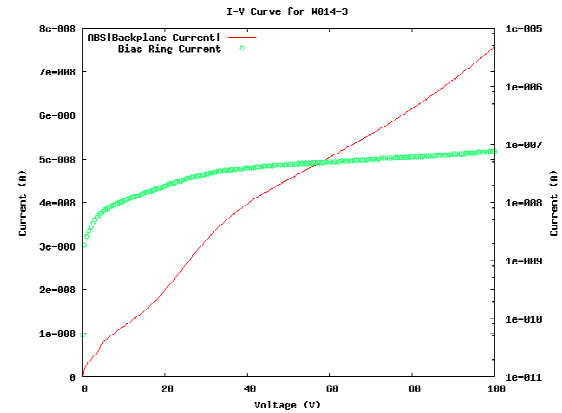
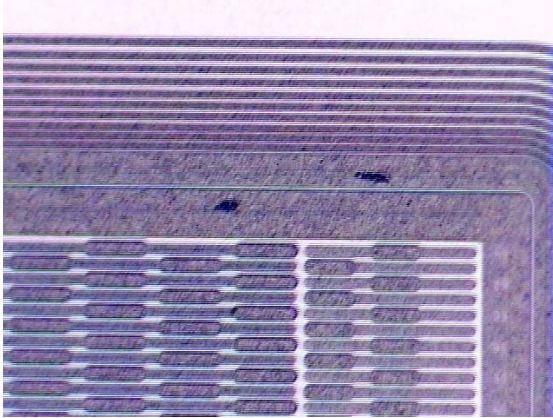


# Correlation between breakdown voltage and scratches?

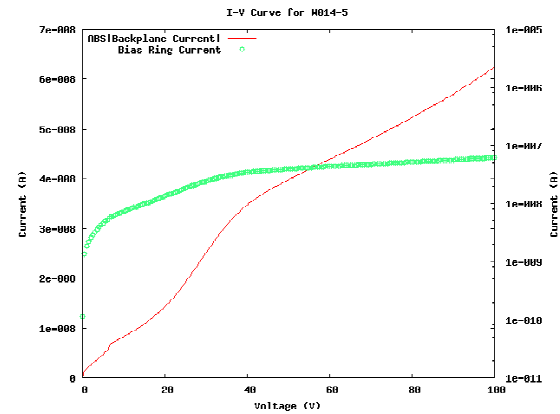
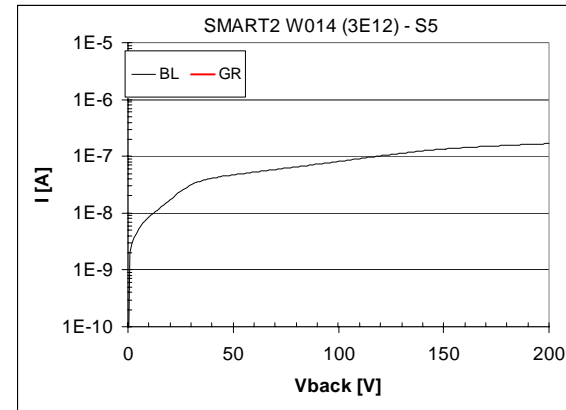
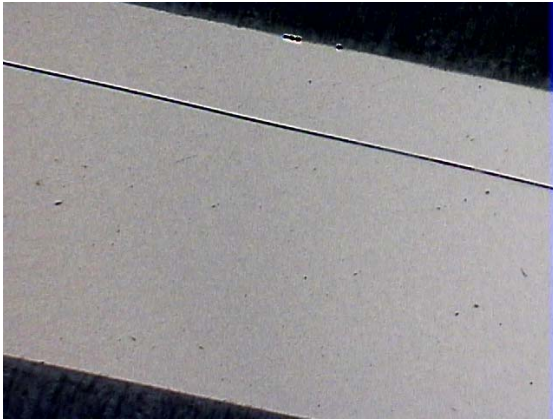
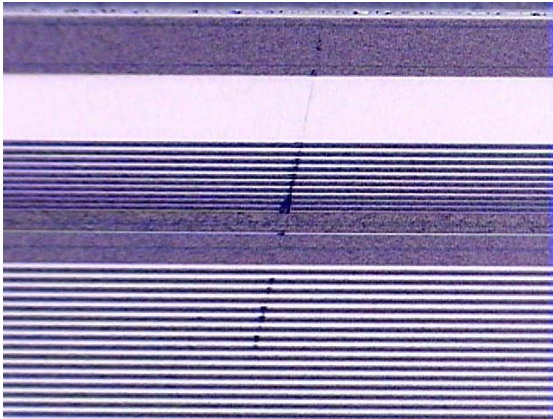
Presentation by John Gerling

11-17-04

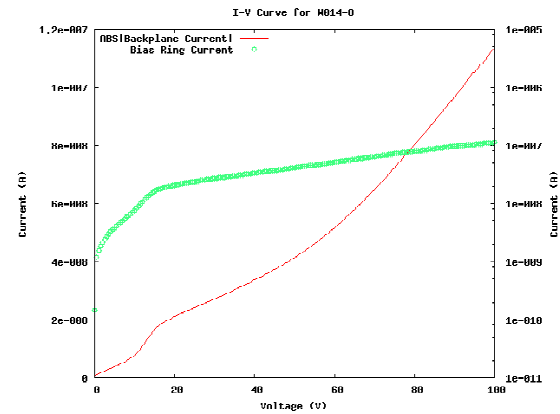
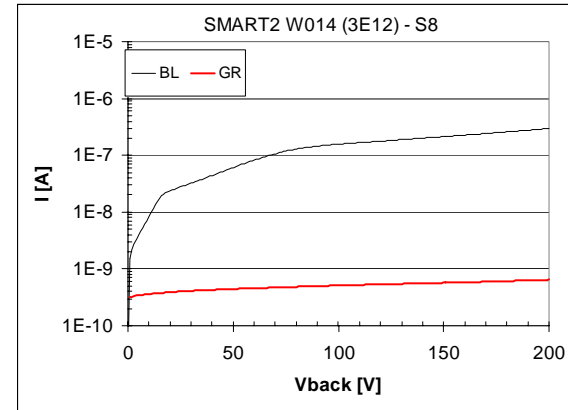
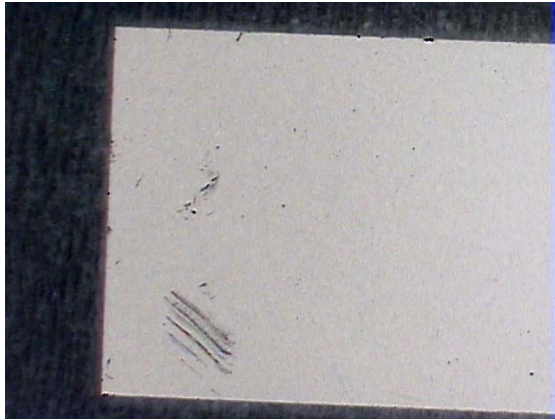
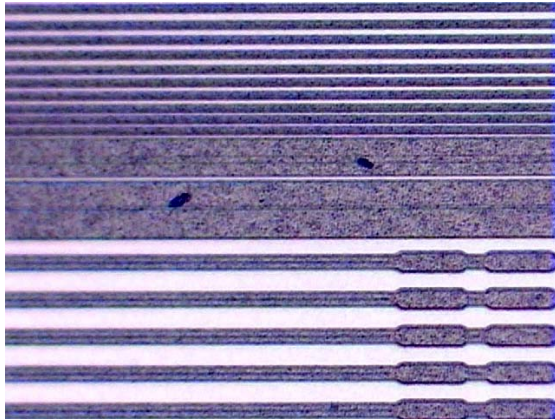
# SMART2 W014-3



# SMART2 W014-5

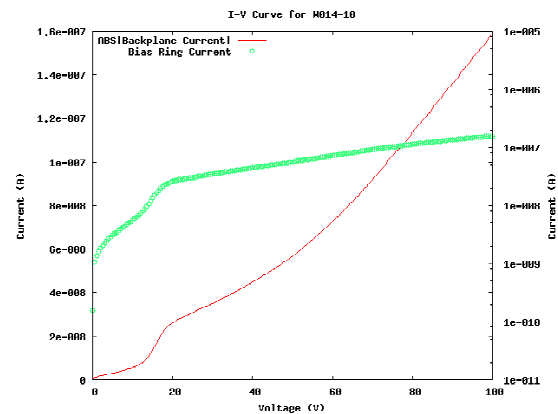
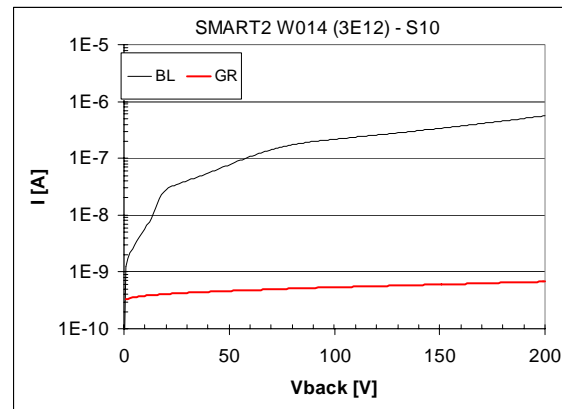


# SMART2 W014-8

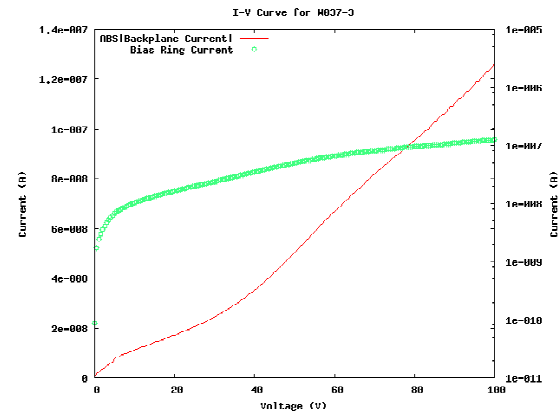
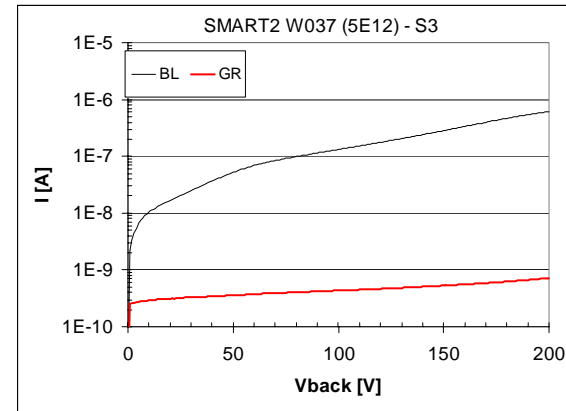
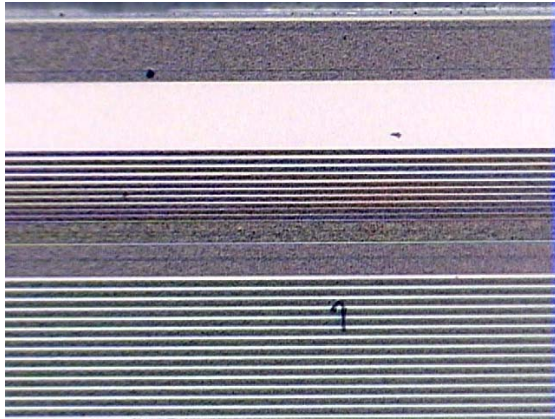


# SMART2 W014-10

No pictures available, topside un-damaged.

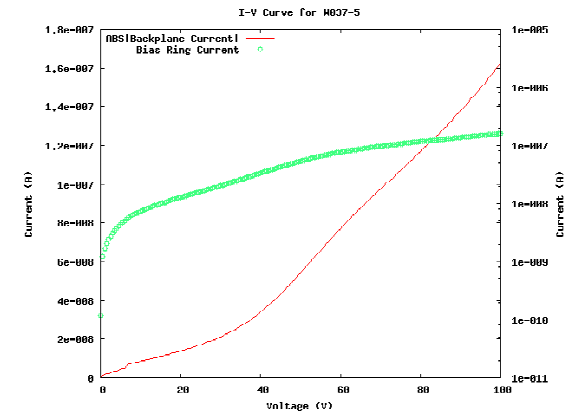
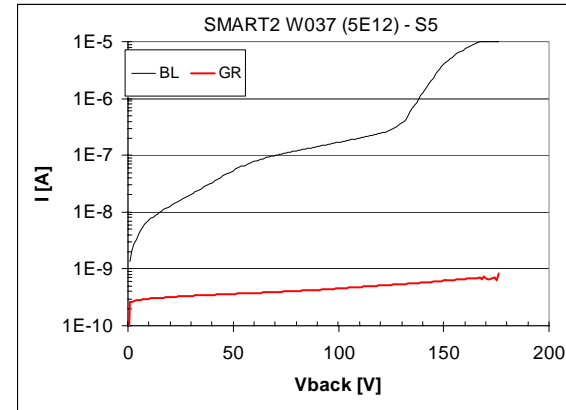
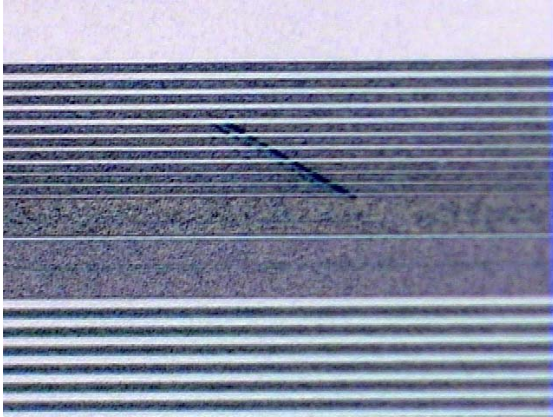


# SMART2 W037-3

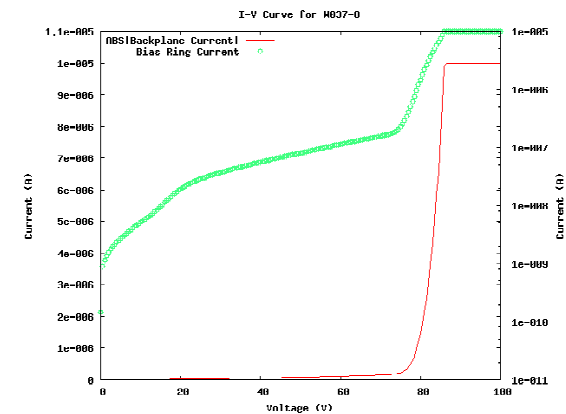
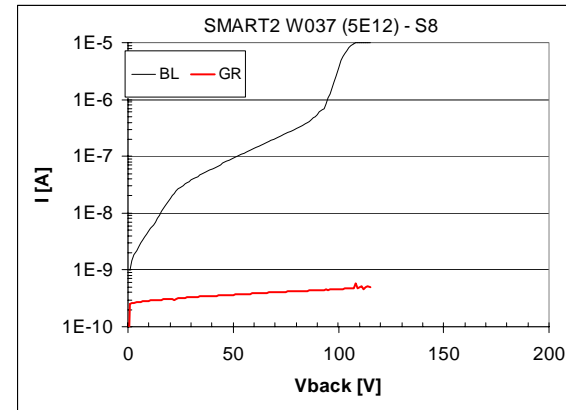
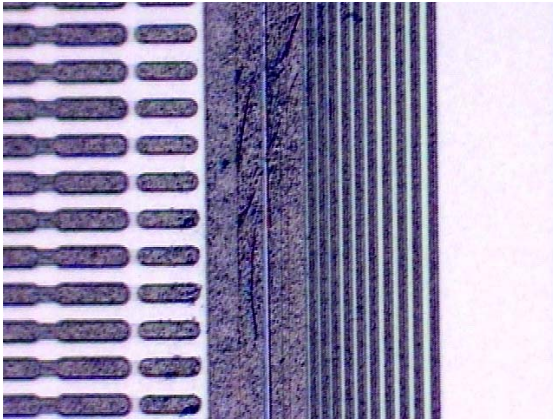




# SMART2 W037- 5

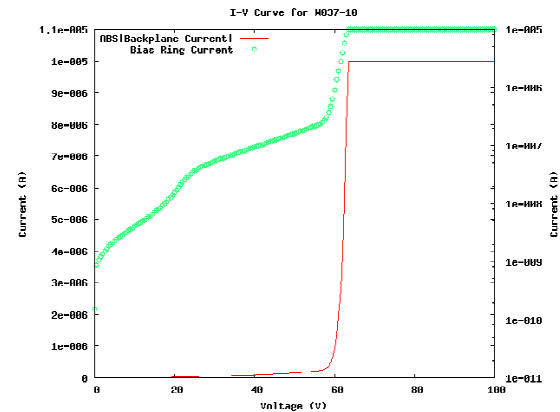
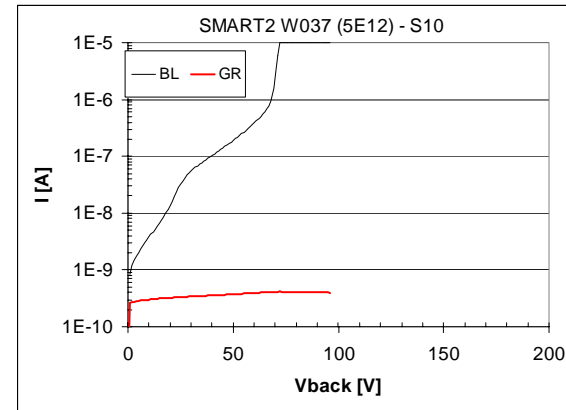
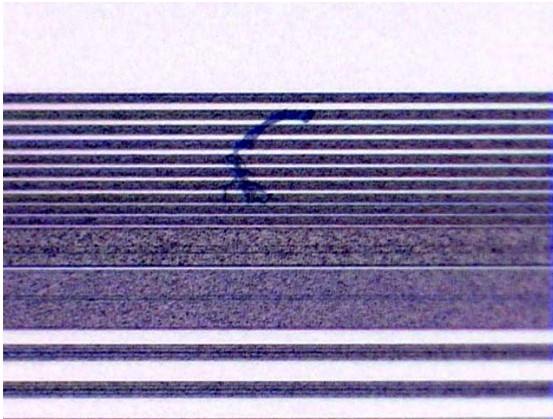


# SMART2 W037-8

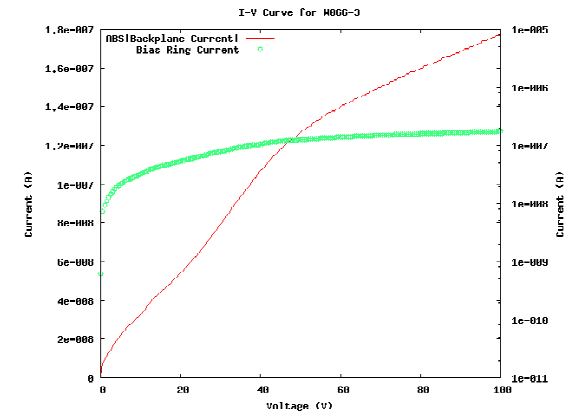
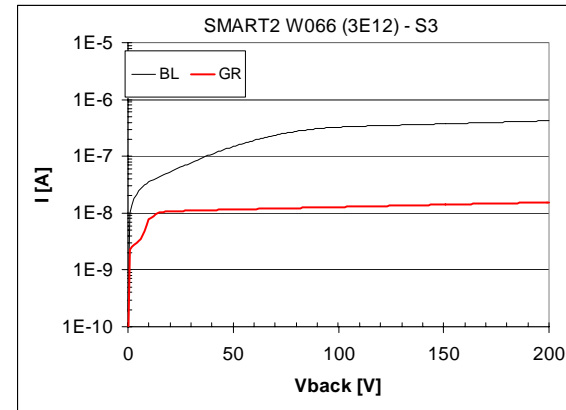




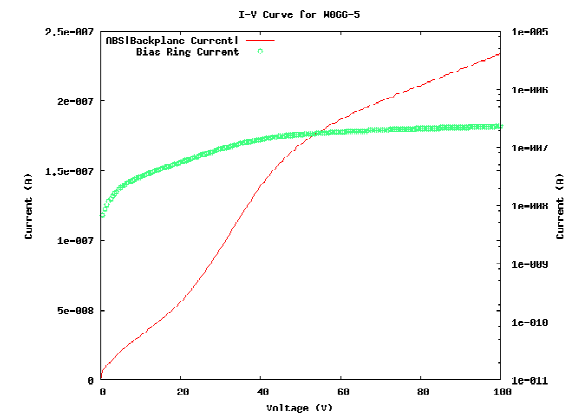
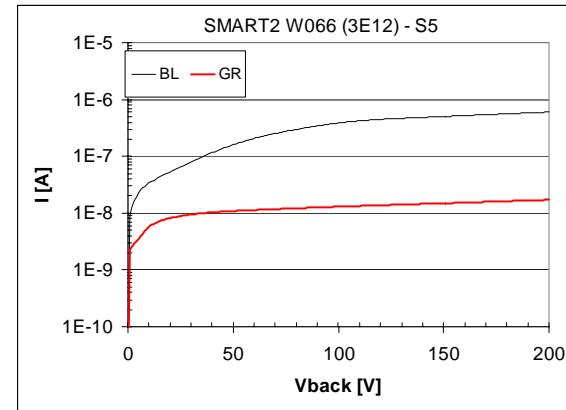
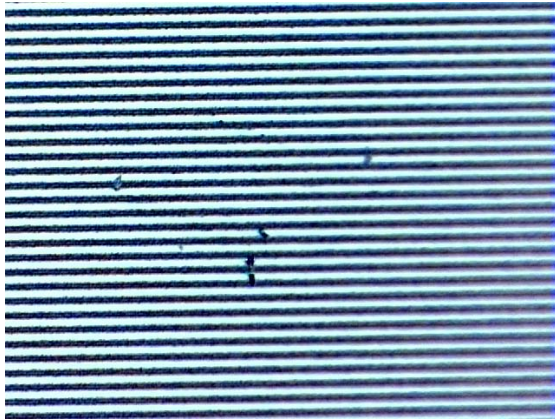
# SMART2 W037-10



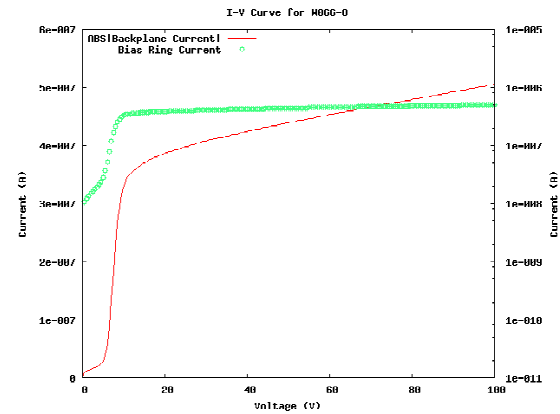
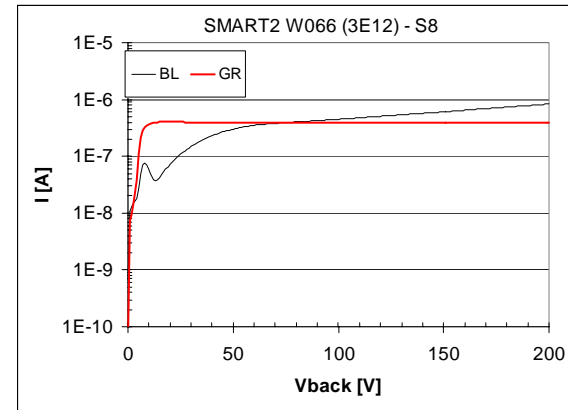
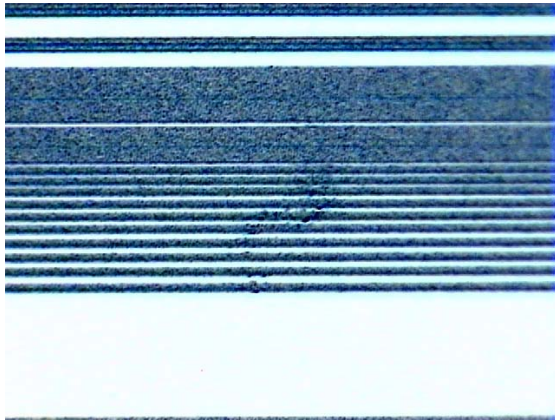
# SMART2 W066-3



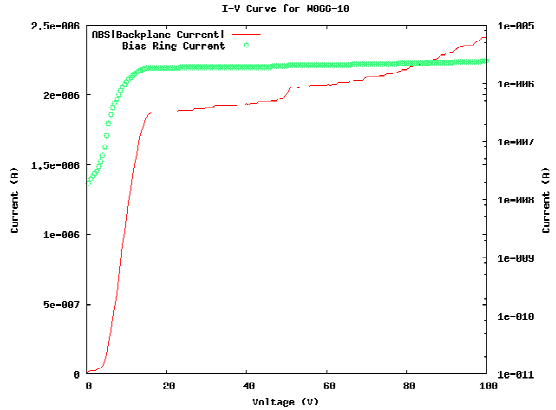
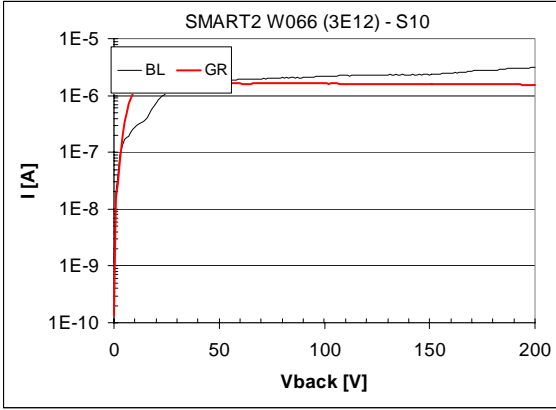
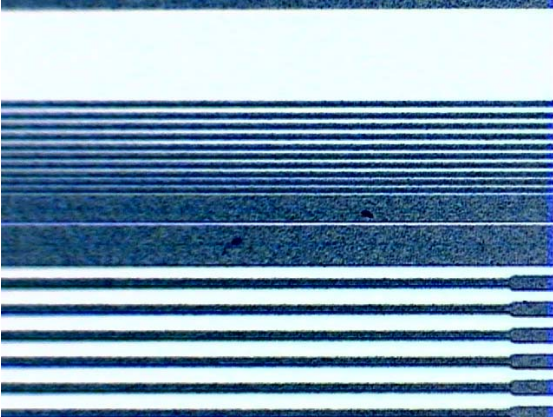
# SMART2 W066-5



# SMART2 W066-8

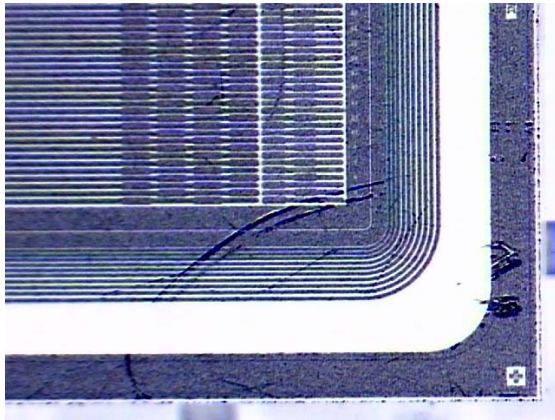


# SMART2 W066-10

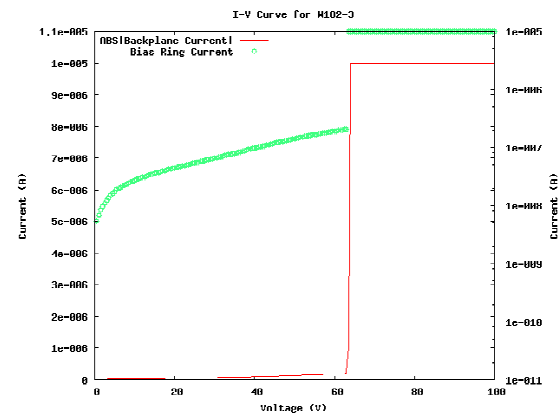
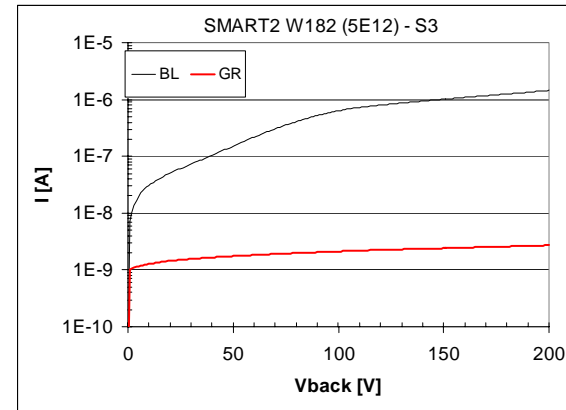




# SMART2 W182-3

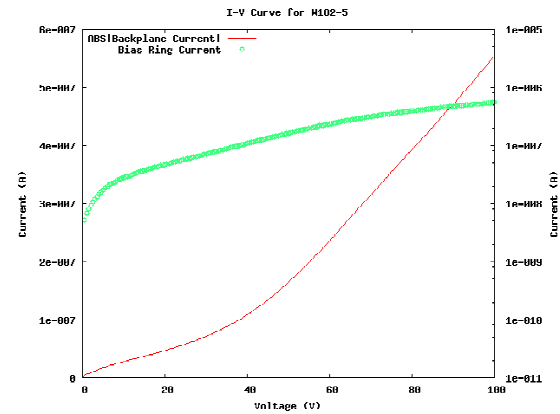
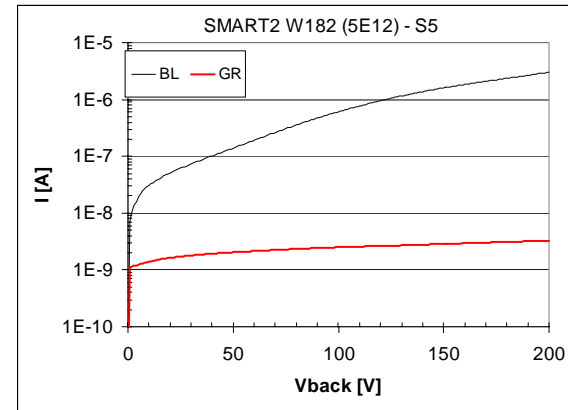
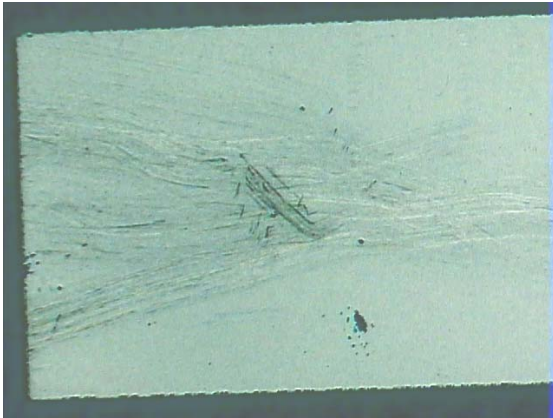
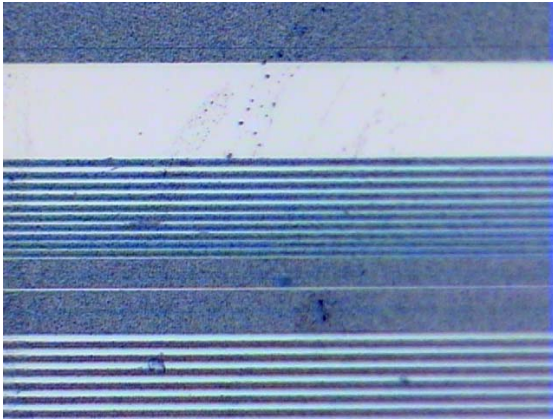


Bonded detector, unable to document backside.

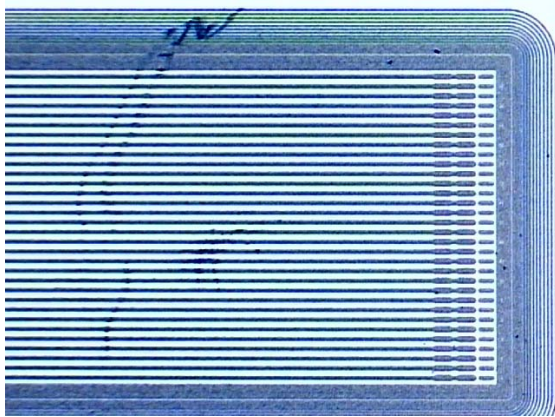




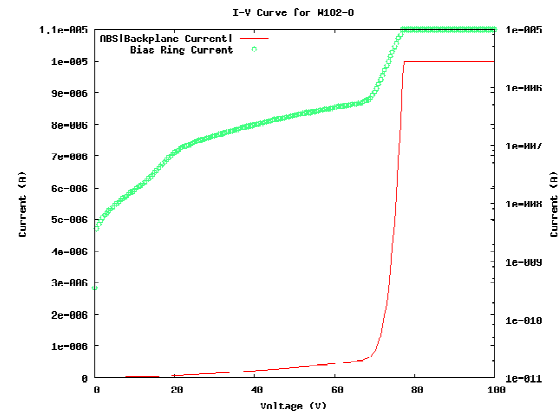
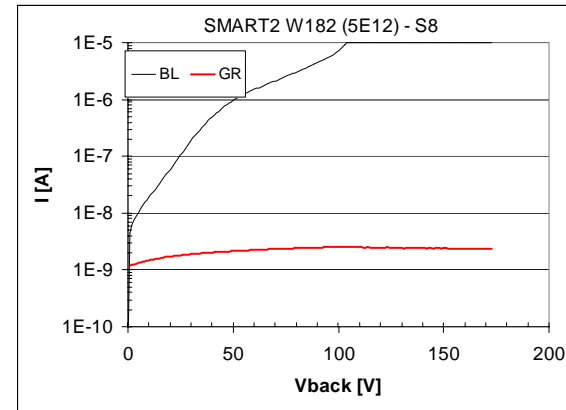
# SMART2 W182-5



# SMART2 W182-8



No backside photo available,  
device currently under going  
tests.



# SMART2 W182-10

