

8

7

6

5

4

3

2

1

REVISIONS		DATE	APPROVED
REV	DESCRIPTION		

D

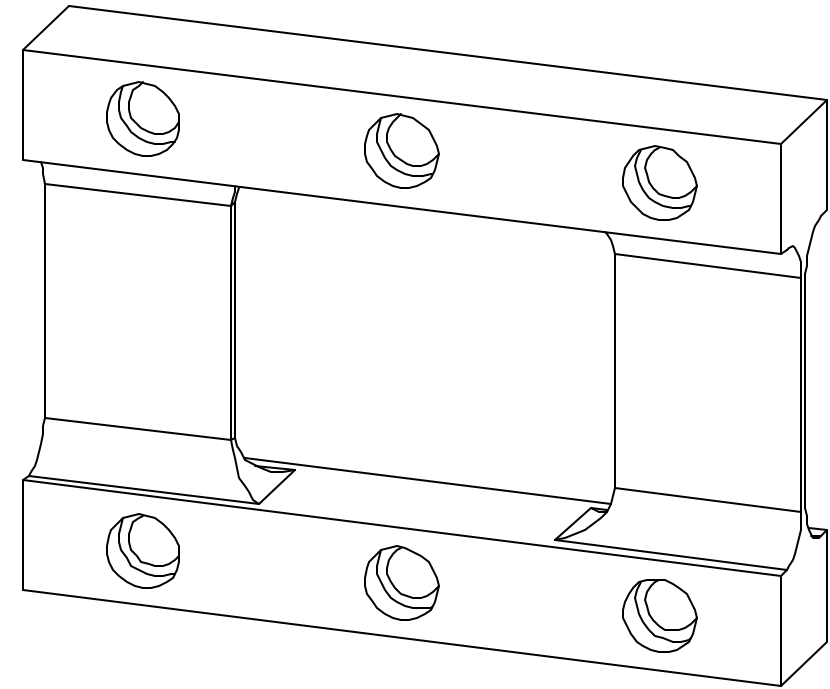
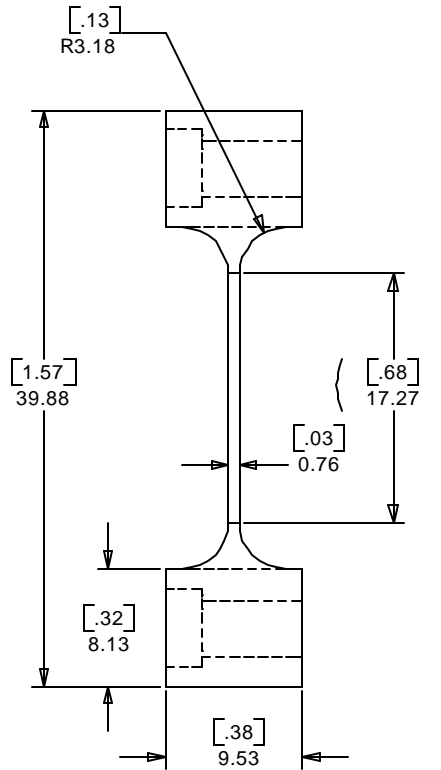
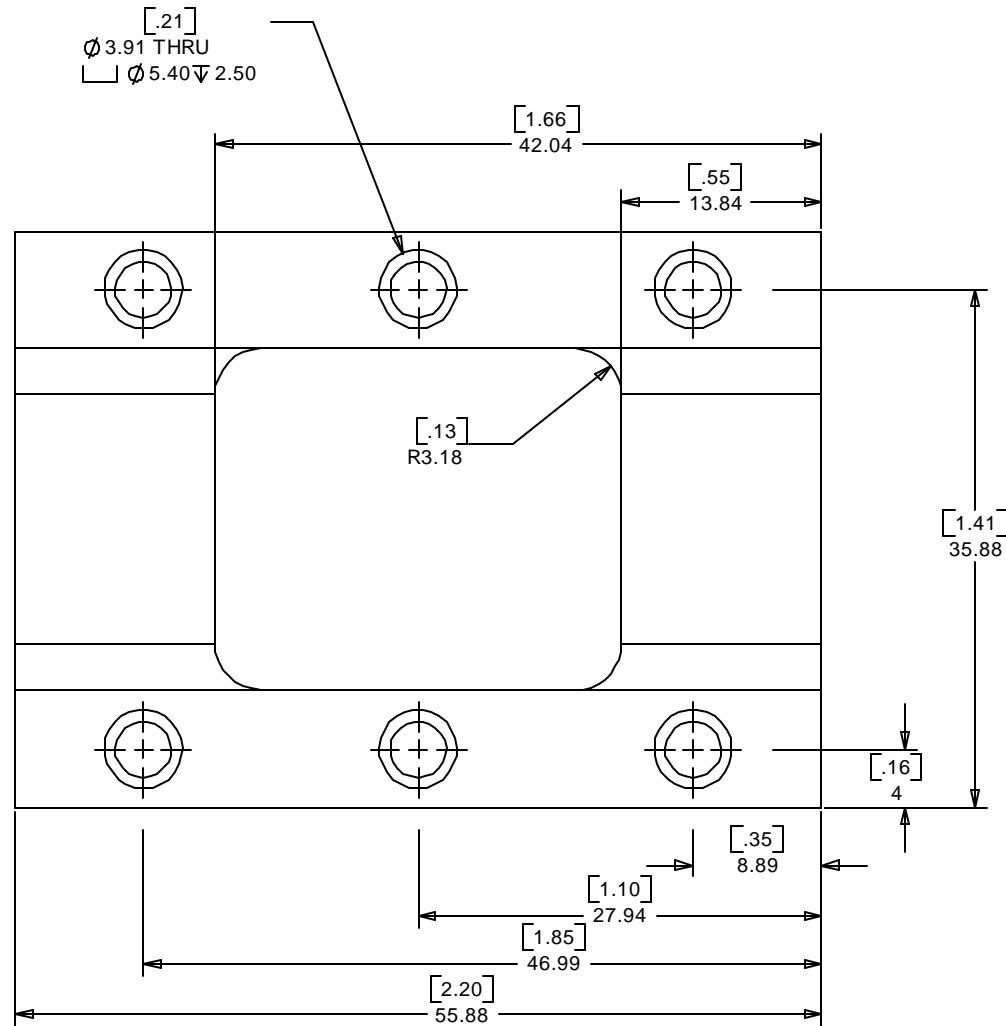
D

C

C

B

B



NOTES: UNLESS OTHERWISE SPECIFIED

- ALL DIMENSIONS IN MILLIMETERS
- DIMENSIONS AND VALUES IN BRACKETS ARE INCHES AND FOR REFERENCE ONLY
- DIMENSIONS AND TOLERANCING PER ASME Y14.5M-1994
- SURFACE TEXTURE PER ASME Y14.36M-1996
- SCREW THREAD CALLOUT PER ASME Y14.6AM-1998
- REMOVE ALL BURRS AND BREAK SHARP EDGES TO A MAXIMUM OF .38
- ALL INSIDE CORNERS TO BE .38 RADIUS MAX
- COUNTERSINK 82 DEGREES ALL TAPPED HOLES TO MAJOR DIAMETER
- COUNTERSINK 82 DEGREES APPROXIMATELY .76 TO 1.52 DEEP ALL DRILLED HOLES
- PARTS TO BE THOROUGHLY CLEANED TO REMOVE ALL OIL, GREASE, DIRT AND CHIPS
- PART NUMBER (DRAWING NO., DASH NO., REVISION NO., SERIAL NO.) TO BE CLEARLY MARKED ON THE PART ITSELF OR ON A BAG CONTAINING THE PART.

MATERIAL: Ti-13V-11Cr-3Al, Aged @ 490 Degrees C

**PRELIMINARY
NOT FOR
PRODUCTION**

UNLESS OTHERWISE SPECIFIED: DIMENSIONS ARE MILLIMETERS -TOLERANCES-	CAD GENERATED DRAWING. DO NOT MANUALLY UPDATE DO NOT SCALE DRAWING		HYTEC, INC	
	DECIMALS .X = +/- .5 .XX = +/- .25		TITLE GLAST TRACKER TRACKER TOWER MID-SPAN FLEXURE MOUNT	
FINISH ALL MACHINED SURFACES 63 RMS FINISH	SIGNATURE	DATE	DWG. NO.	SIZE
	Designer Edward Romero		102-TKR-12-3300	D
	Drawn Edward Romero		SHEET NO.	1 of 1
	Checked Bill Wilds		SCALE	4:1
	Engineer Erik Swensen		REVISION	
	Approved Erik Swensen			

NEXT ASSEMBLY
102-TKR-12-1000-1

PART NO.
102-TKR-12-3300 -1

8

7

6

5

4

3

2

1

A

A